



HP Latex 280 Printer

Offer wider output; enjoy fast, easy productivity



Wider applications with unrivaled versatility¹

- Satisfy a broader range of customer needs with 104-inch addressable width
- Print on a wide range of media from vinyl, textiles,² paper, film, wallpaper to low-cost uncoated options
- Seize your share of the growing temporary textiles market—print on a wider variety of textiles²
- See outdoor durability better than eco-solvent inks;³ offer vehicle graphics with the 3M™ MCS™ Warranty⁴

Productivity made easy

- Print fast, and achieve an extremely short time to delivery
- Produce double-sided prints⁵ with automated registration across sides that move immediately to finishing
- Increase uptime with automatic, reliable, low-maintenance printing and remote management
- Easily control printer settings and tasks via the intuitive touchscreen

¹ The HP Latex 280 Printer produces an extremely broad range of both outdoor and indoor applications from a single device, which surpasses the number of different applications that traditional eco-solvent printers or water-based printers can produce.

For more information, please visit hp.com/go/Latex280

Find a comprehensive list of all latex compatible media along with finished color profiles and printer settings at hp.com/go/mediasolutionslocator

Build a healthier environment, inside and out⁶

- Reach new indoor spaces that eco-solvent can't, like healthcare—water-based HP Latex Ink prints are odorless
- Healthier printing with HP Latex⁶—no special ventilation required,⁷ no hazard warning labels or HAPs⁸
- Meet high standards—HP Latex Inks are UL ECOLOGO^{®9} and GREENGUARD GOLD Certified¹⁰
- Create prints that meet AgBB criteria¹¹ and are rated A+ according to Émissions dans l'air intérieur¹²

² For best results, print on media that does not let the ink trespass onto the printer. Performance may vary depending on media. Please consult your media supplier for compatibility details.

³ Durability comparison based on testing of representative eco-solvent inks including eco-sol Max inks on Avery SA vinyl for display permanence and scratch, rub/abrasion, and chemical resistance. HP image permanence and scratch, smudge, and water resistance estimates by HP Image Permanence Lab on a range of media including HP printing materials.

⁴ The 3M™ MCS™ Warranty is available to certified Graphics Manufacturers. For more information on registration and qualification requirements, refer to 3Mgraphics.com, or contact your 3M representative.

⁵ For best results use media options intended for double-sided printing.

⁶ Based on a comparison of HP Latex Ink technology to competitors with leading market share as of December, 2013 and analysis of published MSDS/SDSs and/or internal evaluation. Performance of specific attributes may vary by competitor and ink technology/formulation.

⁷ Special ventilation equipment (air filtration) is not required to meet U.S. OSHA requirements. Special ventilation equipment installation is at the discretion of the customer—see the Site Preparation Guide for details. Customers should consult state and local requirements and regulations.

⁸ HP Latex Inks were tested for Hazardous Air Pollutants, as defined in the Clean Air Act, per U.S. Environmental Protection Agency Method 311 (testing conducted in 2013) and none were detected.

⁹ UL ECOLOGO[®] Certification to UL 2801 demonstrates that an ink meets a range of stringent criteria related to human health and environmental considerations (see ul.com/EL).

¹⁰ GREENGUARD GOLD Certification to UL 2818 demonstrates that products are certified to GREENGUARD standards for low chemical emissions into indoor air during product usage. For more information, visit ul.com/gg or greenguard.org.

¹¹ HP WallArt printed on HP PVC-free Wall Paper and other prints on HP PVC-free Wall Paper printed with HP Latex Inks meet AgBB criteria for health-related evaluation of VOC emissions of indoor building products, see umweltbundesamt.de/en/topics/health/commissions-working-groups/ausschuss-zur-gesundheitlichen-bewertung-von.

¹² Émissions dans l'air intérieur provides a statement on the level of emission of volatile substances in indoor air posing health risks if inhaled—on a scale from A+ (very low-emission) to C (high-emission).



HP Latex Printing Technologies

HP Latex Inks are water-based inks that combine the best characteristics of solvent inks and water-based inks. You can obtain the outdoor durability and versatility, across all common media types used in sign and display applications, together with high quality, odorless prints, low maintenance, and the environmental advantages of water-based inks.

Prints made with HP Latex Inks are completely cured inside the printer to form a durable image that's ready for lamination, finishing, shipment, or display.

Improve uptime and productivity with HP Services

HP Services offer you a broad portfolio of proven support programs to help keep your business running productively including HP Care Pack Services, preventive maintenance kits, and HP Support Programs.



Point of purchase posters

Reduce costs without compromising quality

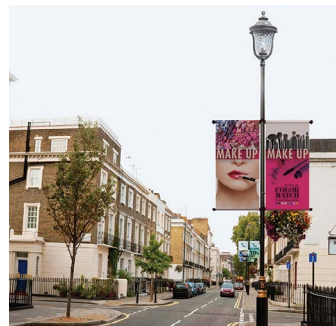
- Great results on all types of paper, including low-cost uncoated papers and traditional offset papers



Light boxes

Deliver high-value backlit applications

- Produce high-resolution prints up to 1200 dpi
- Vibrant, saturated colors
- Choose from a range of backlit printing materials: paper, film, polypropylene, and textiles¹³



Outdoor and event banners

Produce images worthy of building the best brands

- Achieve high-quality results on self-adhesive vinyls and banners
- Offer outdoor display permanence up to three years unlaminated, five years laminated¹⁴



Vehicle wraps and graphics

Achieve fast turnarounds, even on urgent jobs

- Laminate right after printing —no need to wait for prints to dry
- Flexible ink layer conforms to complex surfaces

¹³ Performance may vary depending on media—for more information, see hp.com/go/mediasolutionslocator or consult your media supplier for compatibility details. For best results, use textiles that do not stretch. Performance varies by printer. For mid-volume HP Latex printers, the optional ink collector is required for porous textiles (included with the HP Latex 850 Printer). For low-volume HP Latex printers, print on media that does not let the ink trespass onto the printer.

¹⁴ HP image permanence estimates by HP Image Permanence Lab. Outdoor display permanence tested according to SAE J2527 on a range of media, including HP media; in a vertical display orientation in simulated nominal outdoor display conditions for select high and low climates, including exposure to direct sunlight and water; performance may vary as environmental conditions change. Laminated display permanence using HP Clear Gloss Cast Overlaminates, GBC clear gloss 1.7 mil hot laminate, or Neschen Solvoprint Performance Clear 80 laminate. Results may vary based on specific media performance.



HP Latex 280 Printer

Vast improvement in double-sided printing

- The double-sided capability¹⁵ allows you to print double-sided banners with minimal operator intervention; the HP Optical Media Advance Sensor (OMAS) controls registration automatically
- You can also save time—no need to rewind the roll between sides

More textiles and higher quality

- 264-cm (104-in) fully supported; now you have access to more of the fabric rolls available in the market
- Maximize the variety of media you can handle, including soft materials previously too light to load; print on porous materials with the Platen Cover accessory (B2W90A)
- Even higher image quality with the front tension system and edge holders



Wallcoverings and canvas

Discover a new market opportunity

- Odorless prints meet high environmental standards—ideal for hotels, restaurants, schools
- Experience the easy-to-use HP WallArt solution, visit hpwallart.com¹⁶



Temporary textiles¹⁷

Complement your business with textile signage applications

- Print on a wide variety of textiles, including uncoated and natural textiles
- An easy-to-use solution compared to dye-sublimation techniques

Eco Highlights

- Healthier printing with HP Latex—no special ventilation, no hazard warning labels or HAPs¹
- HP Latex Inks are UL ECOLOGO[®] Certified; Eco Mark-Certified cartridges²
- GREENGUARD GOLD Certified HP Latex Inks;³ produce odorless prints
- A safer workplace—HP Latex Inks are non-flammable, non-combustible and nickel free⁴



¹ Based on a comparison of HP Latex Ink technology to competitors with leading market share as of December, 2013 and analysis of published MSDS/SDSs and/or internal evaluation. Performance of specific attributes may vary by competitor and ink technology/formulation. Special ventilation equipment (air filtration) is not required to meet U.S. OSHA requirements. Special ventilation equipment installation is at the discretion of the customer—see the Site Preparation Guide for details. Customers should consult state and local requirements and regulations. Contains no Hazardous Air Pollutants according to EPA Method 311.

² UL ECOLOGO[®] Certification to UL 2801 demonstrates that an ink meets a range of stringent criteria related to human health and environmental considerations (see ul.com/EL). HP 789 Latex Ink Cartridges, certification number 11 142 004, certified by the Eco Mark Office of Japan Environment Association.

³ GREENGUARD GOLD Certification to UL 2818 demonstrates that products are certified to GREENGUARD standards for low chemical emissions into indoor air during product usage. For more information, visit ul.com/gg or greenguard.org.

⁴ Water-based HP Latex Inks are not classified as flammable or combustible liquids under the USDOT or international transportation regulations. Testing per the Pensky-Martins Closed Cup method demonstrated flash point greater than 110° C. Nickel free demonstrated according to testing conducted for HP Latex Inks to achieve UL ECOLOGO[®] Certification. UL ECOLOGO[®] Certification to UL 2801 demonstrates that an ink meets a range of stringent criteria related to human health and environmental considerations (see ul.com/EL).

Please recycle large-format printing hardware and printing supplies.

Find out how at our website
hp.com/ecosolutions

¹⁵ For best results use media options intended for double-sided printing.



¹⁶ Requires an HP WallArt account, Internet connection, and connected Internet-capable device. For more information, see hpwallart.com.

¹⁷ Performance may vary depending on media—for more information, see hp.com/go/mediasolutionslocator or consult your media supplier for compatibility details. For best results, use textiles that do not stretch. Performance varies by printer. For mid-volume HP Latex printers, the optional ink collector is required for porous textiles (included with the HP Latex 850 Printer). For low-volume HP Latex printers, print on media that does not let the ink trespass onto the printer.

Technical specifications

Print speed¹⁸	Up to 70 m ² /hr (753 ft ² /hr)		
Media	Handling	Roll feed, take-up reel, automatic cutter (for vinyl, paper-based media, backlit polyester film, and thin banners)	
	Roll size	58 to 264-cm (23 to 104-in) rolls, up to 100 kg (220 lb)	
	Roll diameter	Up to 25-cm (9.8-in) outside diameter	
	Thickness	Up to 0.5 mm (19.7 mil)	
Printing	Printing modes ¹⁸	2-pass bidirectional 70 m ² /hr (753 ft ² /hr) 4-pass bidirectional 40 m ² /hr (430 ft ² /hr) 6-pass bidirectional 28 m ² /hr (301 ft ² /hr) 8-pass bidirectional 18.4 m ² /hr (198 ft ² /hr) 10-pass bidirectional 14.7 m ² /hr (158 ft ² /hr) 12-pass bidirectional 12.3 m ² /hr (132 ft ² /hr) 16-pass bidirectional 9.2 m ² /hr (99 ft ² /hr)	
	Print resolution	1200 x 1200 dpi	
	Margins	Top x bottom x left x right: 5 x 5 x 5 x 5 mm (0.2 x 0.2 x 0.2 x 0.2 in)	
	Printheads	6 (2 x yellow/black, 2 x cyan/light cyan, 2 x light magenta/magenta)	
	Connectivity	Interfaces (standard)	Gigabit Ethernet (1000Base-T)
		Dimensions (w x d x h)	Printer: 3581 x 730 x 1377 mm (141 x 29 x 54 in) Shipping: 3850 x 1100 x 1675 mm (151.6 x 43.3 x 65.9 in)
Weight	Printer: 380 kg (837 lb), Shipping: 629 kg (1387 lb)		
What's in the box	HP Latex 280 Printer, printheads, printhead cleaning kit, ink maintenance kit, cleaning container, printer stand, take-up reel, 61-in loading accessory, 104-in loading accessory, edge holder, 3-phase voltage kit, waste management diverter, user maintenance kit, quick reference guide, documentation software		
Environmental ranges	Operating temperature:	15 to 30°C (59 to 86°F), Storage temperature: -25 to 55°C (-13 to 131°F)	
	Operating humidity:	30 to 80% RH (non-condensing)	
Acoustic	Sound pressure:	61 dB(A) (active); 45 dB(A) (standby)	
	Sound power:	8 B(A) (active); 6.7 B(A) (standby)	
Power consumption	4.2 kW (printing); 8 to 10 kW (maximum); < 64 watts (powersave)		
	Power requirements	Input voltage: 3-phase, 200 to 240 VAC (+/- 10%), 40 A or 380 to 415 VAC (-10% +6%), 24 A; 50/60 Hz (+/- 3 Hz)	
Certification	Safety	USA and Canada (CSA certified), EU (LVD and EN 60950-1 compliant), Russia (GOST), China (CCC)	
	Electromagnetic	Compliant with Class A requirements, including: USA (FCC rules), Canada (ICES), EU (EMC Directive), Australia (ACMA), New Zealand (RSM), China (CCC), Japan (VCCI), Korea (KCC)	
	Environmental	WEEE, EU RoHS, China RoHS, REACH, EuP, FEMP, UL	
Warranty	One-year limited hardware warranty; 8-hour, 5 days a week phone support		

Ordering information

Product	CQ871A	HP Latex 280 104-in Printer
Accessories	CZ277A	HP Designjet L28500 (104-in Printer) 3-in Spindle
	CZ278A	HP Designjet 104-in Media Loading Accessory
	CR765A	HP Designjet 61-in Media Loading Accessory
	CQ201A	HP Designjet L2x500 User Maintenance Kit
	B2W90A	HP Designjet L26500/28500 Platen Cover
	B8K59A	HP Designjet L26500/L28500 Edge Holder
Original HP printheads	CN702A	HP 792 Yellow/Black Latex Printhead
	CN703A	HP 792 Cyan/Light Cyan Latex Printhead
	CN704A	HP 792 Light Magenta/Magenta Latex Printhead
	CN705A	HP 792 775-ml Black Latex Ink Cartridge
Original HP ink cartridges	CN706A	HP 792 775-ml Cyan Latex Ink Cartridge
	CN707A	HP 792 775-ml Magenta Latex Ink Cartridge
	CN708A	HP 792 775-ml Yellow Latex Ink Cartridge
	CN709A	HP 792 775-ml Light Cyan Latex Ink Cartridge
	CN710A	HP 792 775-ml Light Magenta Latex Ink Cartridge
	Original HP maintenance supplies	CR278A
CR279A		HP 792 Latex Ink Maintenance Kit
CH622A		HP 789/792 Latex Printhead Cleaning Container
Original HP large format printing materials	HP printing materials are designed together with HP Latex Inks and HP Latex printers to provide optimal image quality, consistency, and reliability.	
	HP PVC-free Wall Paper (FSC® and GREENGUARD GOLD Certified) ¹⁹	
	HP Everyday Matte Polypropylene, 3-in Core  ²⁰	
	HP Backlit Polyester Film  ²⁰	
	HP Premium Satin Canvas	
	For the entire HP Large Format Printing Materials portfolio, please see globalBMG.com/hp .	
Service and support	U0M00E	HP 2 year Next business day
	U0L97E	HP 3 year Next business day
	U0M03E	HP 3 year Next business day Defective Media Retention
	U0M10PE	HP 1 year Post warranty Next business day Defective Media Retention
	U0M13PE	HP 1 year Post warranty Next business day
	U0M11PE	HP 2 year Post warranty Next business day
	U1XQ1E	HP Install and Training for Hardware Support

¹⁸ Speed based on printing using full width 264 cm/104 in.

¹⁹ BMG trademark license code FSC®-C115319, see fsc.org. HP trademark license code FSC®-C017543, see fsc.org. Not all FSC®-certified products are available in all regions. GREENGUARD GOLD Certification to UL 2818 demonstrates that products are certified to GREENGUARD standards for low chemical emissions into indoor air during product usage. For more information, visit ul.com/gg or greenguard.org.

²⁰ HP Large Format Media take-back program availability varies. Recycling programs may not exist in your area. See hp.com/recycle for details.

For HP Certified third-party RIP solutions, please visit us online at:
hp.com/go/Latex280/solutions

See Site Preparation Guide requirements to ensure complete compliance with all installation and operation requirements, safety procedures, warnings, cautions, and local regulations. Download this and other manuals from
hp.com/go/Latex280/manuals



HP Latex 280 Printer (formerly the HP Designjet L28500 Printer series)

